

ITEM NO.	PART NUMBER	DESCRIPTION	QTY.
1	GF39010	VSK5V LOCK NUT	1
2	GS08031	SMARTVENT GEN2 BODY, MACHINED 2" NPT	1
3	GS08055	SMARTVENT GEN2 PRESSURE POPPET WITH VACUUM	1
4	GS10008	COVER RETAINING RING	1
5	GS10009	SMART VENT COVER	1
6	GS10012	BODY O-RING TEF-O-SIL	1
7	GS10045	SMARTVENT GEN2 VACUUM POPPET	1
8	GS11005	SMARTVENT GEN2 SPRING 5 PSI	1
9	GS11054	SMARTVENT VACUUM O-RING GEN2 TEF-O-SIL	1
10	GS11097	SMARTVENT GEN2 PRESSURE TEF-O-SIL O-RING	1
11	GT06000	IBC VACUUM SPRING	1

NOTES:

- SET VACUUM IS 2 inHg ± 1 inHg, 1 inHg ± 0.5 inHg, 0.5 inHg +1.0/-0.0 inHg, OR ACCORDING TO ORDER

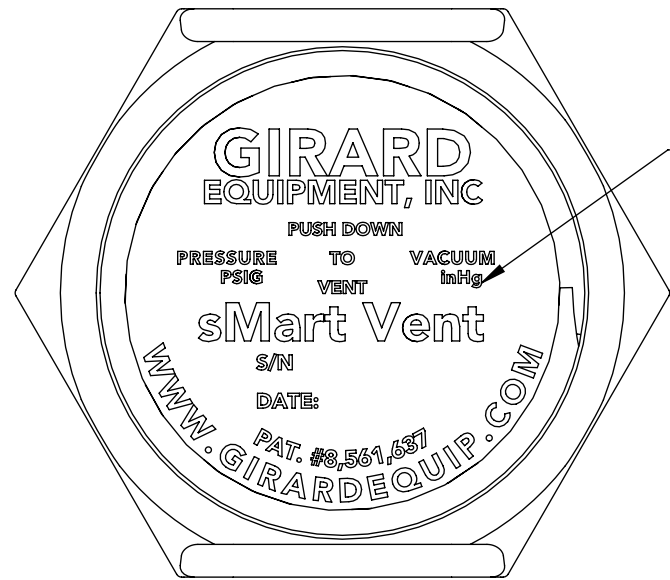
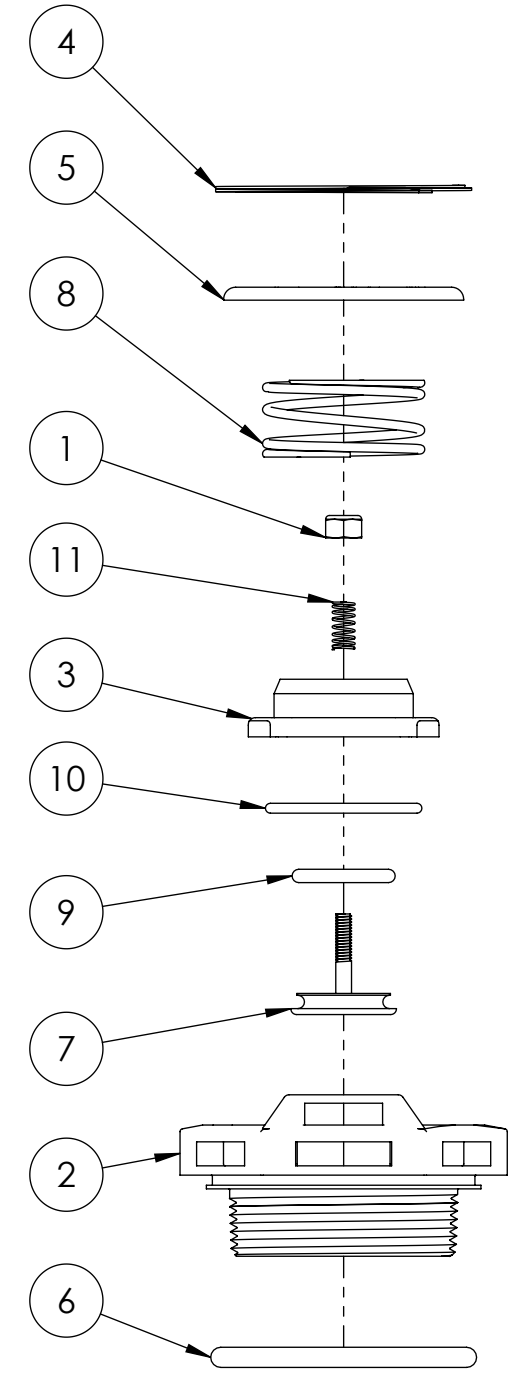
VACUUM TEST

- VACUUM IS TO BE SET AT MAX AND VALVE OPENED ALL THE WAY
- IF TARGET VACUUM IS NOT MET, ADJUST VACUUM NUT AS NEEDED AND RETEST

CRACKING PRESSURE TEST

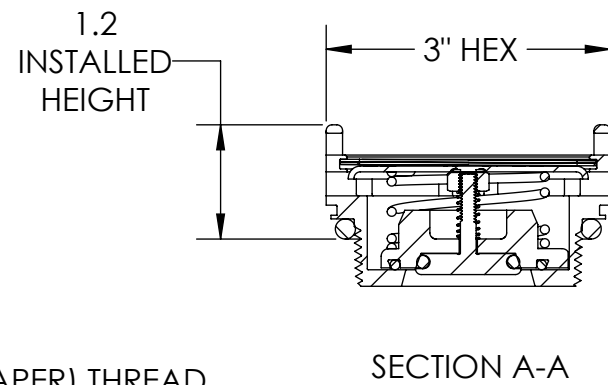
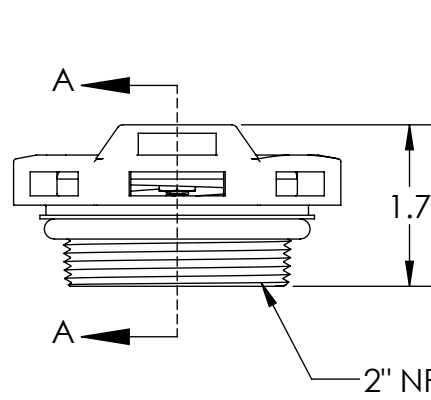
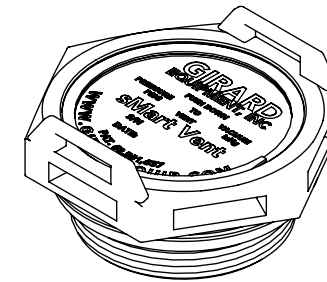
- RAPIDLY INCREASE GAS PRESSURE AND BLOW OUT THE ASSEMBLY, ASSURE THAT THE O-RING DOES NOT UNSEAT
- REMOVE ALL PRESSURE AND BLEED OFF
- SLOWLY INCREASE GAS PRESSURE UNTIL THE VALVE OPENS, START TO DISCHARGE IS 5 ± 1 PSIG
- CLOSE AIR SUPPLY OFF AND WAIT FOR VALVE TO RESEAT AND HOLD PRESSURE FOR 30 SECONDS, RESEAT PRESSURE BETWEEN 2.0 AND 6.0 PSIG

REVISIONS					
REV.	DESCRIPTION	DATE	DRAWN	ECN	CHECKED
A	INITIAL RELEASE	7/17/17	KLK	20170713	EB
B	RESEAT MINIMUM 2.0 PSIG, WAS 3.2 PSIG	1/27/21	RPC	20180622	MF



LASER ETCH THE FOLLOWING INFORMATION:

- DATE
- SERIAL NUMBER
- VACUUM PRESSURE
- PRESSURE = 5 PSIG



THIS IS THE PRIVATE AND CONFIDENTIAL PROPERTY OF GIRARD EQUIPMENT INC. AND IS NOT TO BE COPIED OR REPRODUCED WITHOUT THE WRITTEN CONSENT OF GIRARD EQUIPMENT INC.



UNLESS OTHERWISE SPECIFIED DIMENSIONS ARE IN INCHES		
.XX ±.015	.XXX ±.005	ANGLES ±0° 30'
MATERIAL SEE BOM		
FINISH		
APPROVALS	DATE	
DRAWN KLK	7/17/17	
CHECKED EB	7/21/17	
ESTIMATED WEIGHT 1.1	SCALE 1:2	

GIRARD EQUIPMENT, INC.
4360 Old Dixie Highway Vero Beach, FL 32967

SMART VENT GEN2 5PSI WITH VACUUM 2" NPT TEF-O-SIL

SIZE B	REV. B
-----------	-----------