

ITEM NO.	PART NUMBER	DESCRIPTION	QTY.
1	GM30030	3" ORANGE DURASEAL RING GASKET	1
2	GT01000	IBC FLAP	1
3	GT02100	IBC S/S LINK	1
4	GT03000	IBC LONG PIN	2
5	GT04000	IBC SHORT PIN	1
6	GT05000	IBC PRESSURE SPRING	1
7	GT06500	IBC CONICAL VACUUM SPRING	1
8	GT07000	IBC RETAINING CLIP	1
9	GT08005	2ND GEN IBC POPPET	1
10	GT09010	IBC VACUUM POPPET - POLY	1
11	GT10000	IBC VACUUM O-RING TEF-O-SIL	1
12	GT11000	IBC PRESSURE O-RING TEF-O-SIL	1
13	GT12000	3" NPT IBC HOUSING, MACHINED	1

NOTES:

USE QF-824-007 3A SANITARY TEST LOG

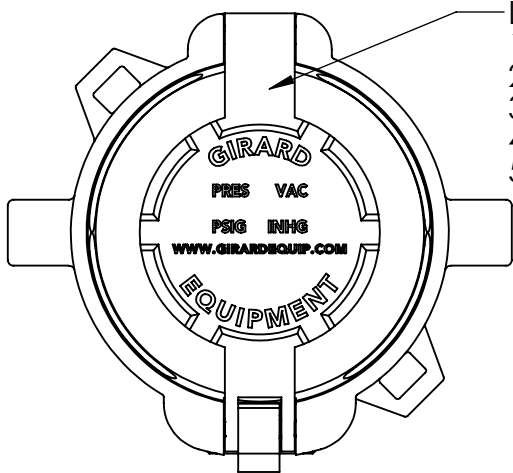
VACUUM

- VACUUM IS TO BE SET AT MAX (± 0.5 inHg) AND VALVE OPENED ALL THE WAY.
- IF TARGET VACUUM IS NOT MET, ADJUST VACUUM NUT AS NEEDED AND RETEST.
- MAX ALLOWABLE TEMPERATURE FOR VACUUM POPPET IS 250°F.

SEAT LEAKAGE TEST

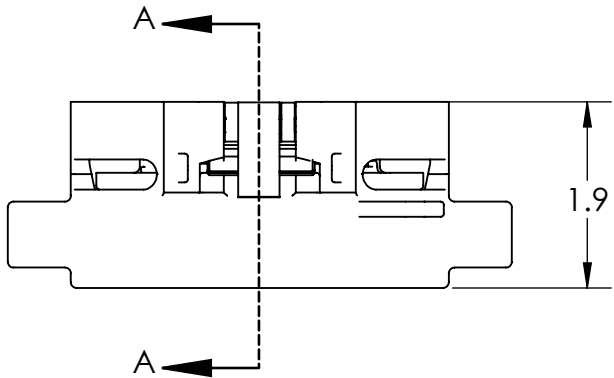
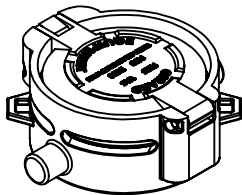
- RAPIDLY INCREASE GAS PRESSURE AND BLOW OUT THE ASSEMBLY, ASSURE THAT THE O-RING DOES NOT UNSEAT.
- SLOWLY INCREASE GAS PRESSURE UNTIL THE VALVE OPENS. START TO DISCHARGE PRESSURE IS 5 ± 1 PSIG.
- CLOSE AIR SUPPLY OFF AND WAIT FOR VALVE TO RESEAT.
- RESEAT PRESSURE BETWEEN 3.2 PSIG AND 6 PSIG.

REVISIONS					
REV.	DESCRIPTION	DATE	DRAWN	ECN	CHECKED
A	INITIAL RELEASE	6/15/20	MGS	20200605	<i>EJB</i>



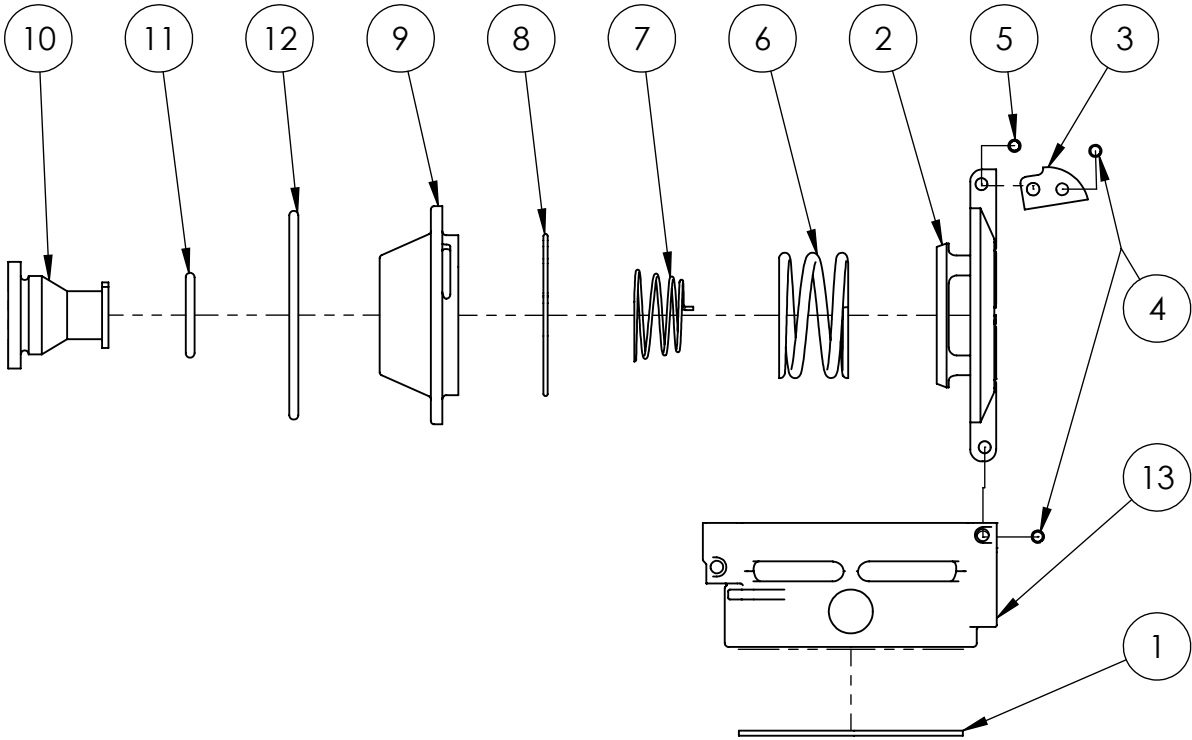
LASER ETCH THE FOLLOWING INFORMATION:

- DATE
- SERIAL NUMBER
- PRESSURE (SET, FLOW @ PSI)
- VACUUM (SET, FLOW @ PSI)
- FUSIBLE (SET, FLOW @ PSI)



3" PIPE THREAD

SECTION A-A



SET PRESSURE	5 PSIG
START-TO-DISCHARGE PRESSURE	4-6 PSIG
RESEAT PRESSURE	3.2-6 PSIG
VAC SET PRESSURE	2 in Hg
FLOW RATE @ 9.4 PSIG	27,900 SCFH
FLOW RATE (VAC) @ 4 in Hg	3,300 SCFH
FLOW RATE (FUSIBLE) @ 9.4 PSIG	4,711 SCFH

THIS IS THE PRIVATE AND CONFIDENTIAL PROPERTY OF GIRARD EQUIPMENT INC. AND IS NOT TO BE COPIED OR REPRODUCED WITHOUT THE WRITTEN CONSENT OF GIRARD EQUIPMENT INC.



UNLESS OTHERWISE SPECIFIED DIMENSIONS ARE IN INCHES		
.XX ±.015	.XXX ±.005	ANGLES ±0° 30'
MATERIAL SEE BOM		
FINISH		
APPROVALS	DATE	
DRAWN MGS	6/15/20	
CHECKED <i>EJB</i>	7/7/20	
ESTIMATED WEIGHT 3.0	SCALE 1:2	

GIRARD EQUIPMENT, INC. 4360 Old Dixie Highway Vero Beach, FL 32967	
2ND GEN IBC 5# TEFOSIL	
SIZE B	GS62070
REV. A	